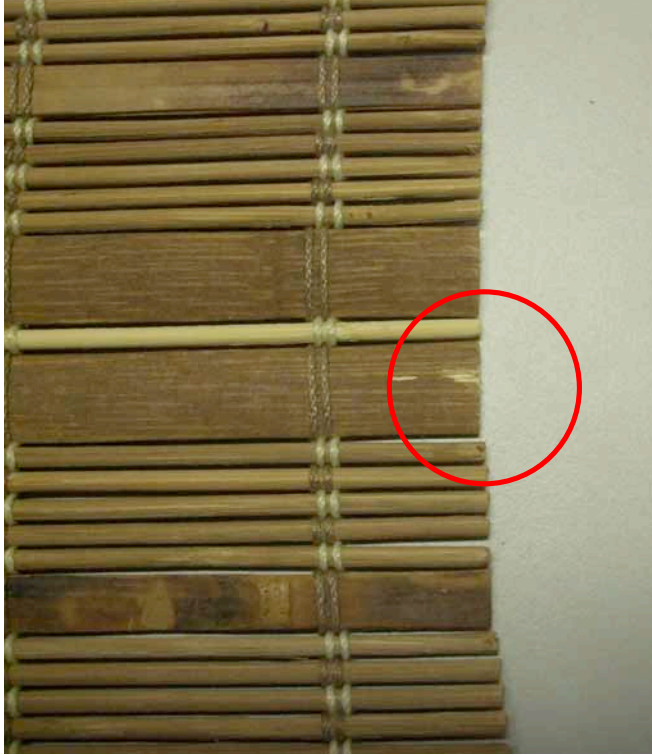


## TASK: Cracks in Edges of Slats or Threads Fraying From Side of Material

Use If/When: Cracks or frays on edges of Woven Wood shade

Tools Needed: Scissors, Glue

1. Cracks can easily be covered with regular wood stain for most patterns or white paint in some cases. Cracks are unavoidable due to the cutting process.



2. Threads can be carefully cut with sharp scissors. Loose ends can be carefully secured with glue. On fabric with dense yarn patterns, thread can be carefully pulled out of the side of the woven material.

