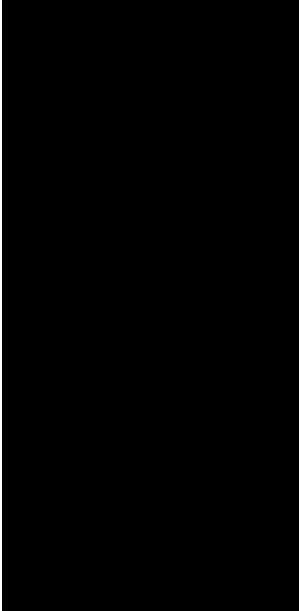


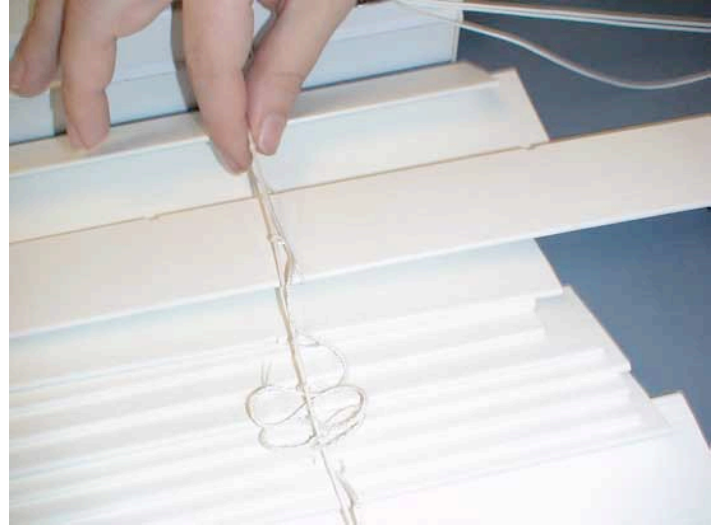
TASK: Install Replacement Slats with No Route Holes – 2” or Greater Horizontal Blinds

Use If/When: Notched (without route holes) slats need to be replaced.

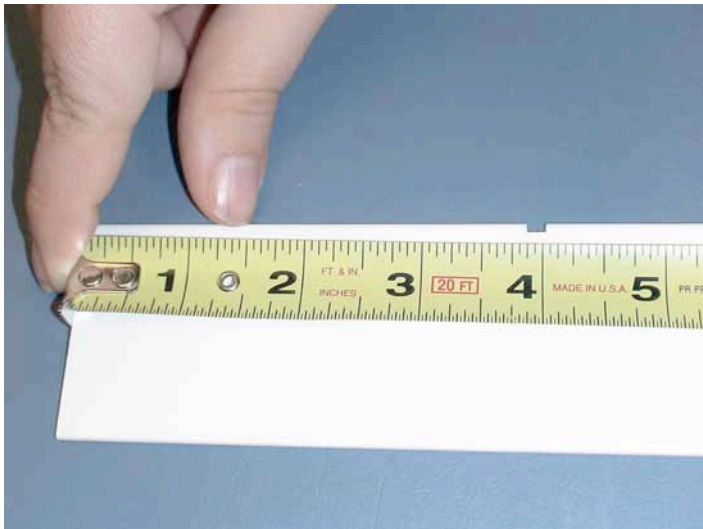
Tools Needed: Metal Tape Measure and Pencil



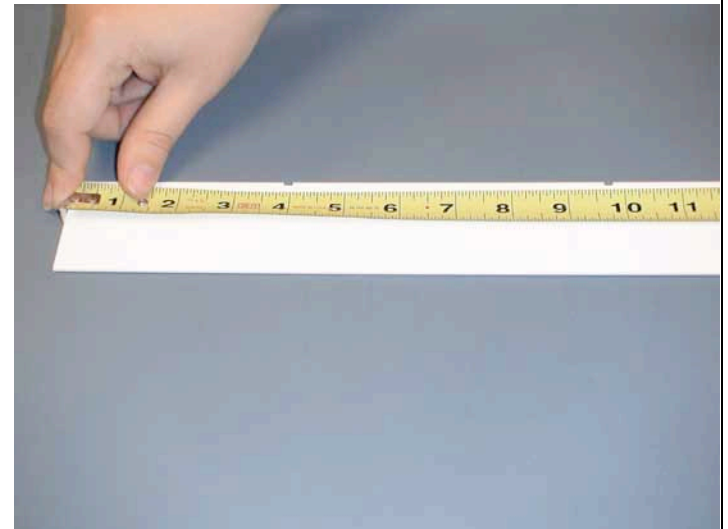
1. Slide slat and remove from ladders.
Lay slat on flat surface.



2. Using a metal tape measure, measure from the left end of the slat to the middle of the first notch. Record this measurement to the nearest 1/16".



3. With the tape measure still on the left side of the slat, measure to the middle of the second notch from the left side of the slat. Record this measurement.



TASK: Install Replacement Slats with No Route Holes – 2” or Greater Horizontal Blinds

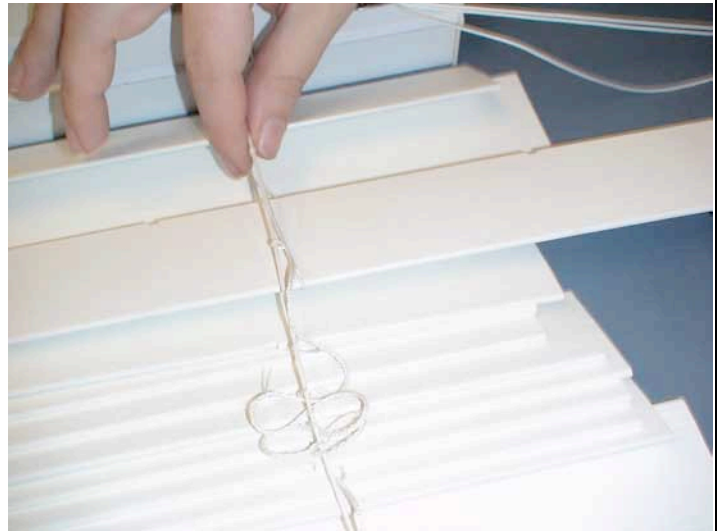
Use If/When: Notched (without route holes) slats need to be replaced.

Tools Needed: Metal Tape Measure and Pencil

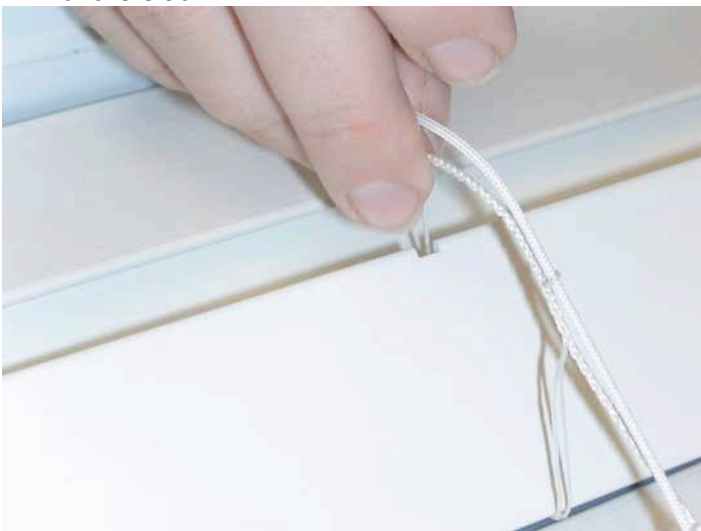
4. Proceed in the same manner with the remaining notches. Record all the remaining measurements. Record the overall width of the slat to the nearest 1/16".



5. Locate the slat to be replaced. Slide slat and remove from the ladders of the blind.



6. Slide replacement slat into the ladders making sure that it rests on top of the ladder rungs. Continue for all replacement slats making sure ladder cords run through the notches in the back of the slat.



7. Raise and lower the blind with the slats in the open position to make sure it operates properly.

